

# scan and cast your ballot

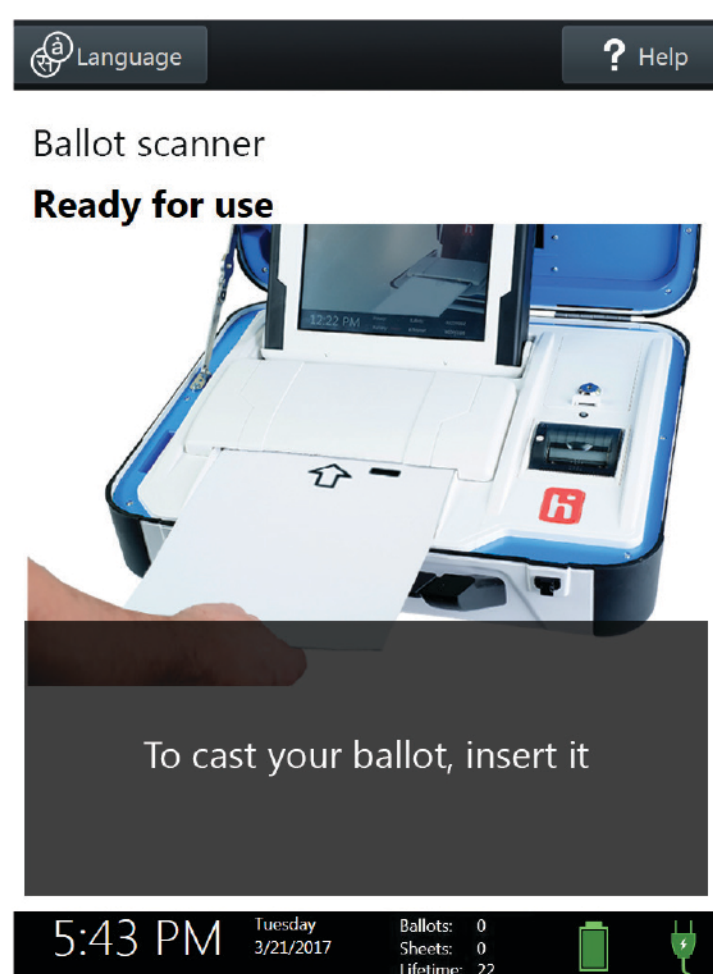


- ▶ The ballot scanner is touch screen operated
- ▶ Follow the instructions on the screen to:
  - Insert your ballot
  - Respond to any on-screen messages
  - Verify your ballot has been cast

1

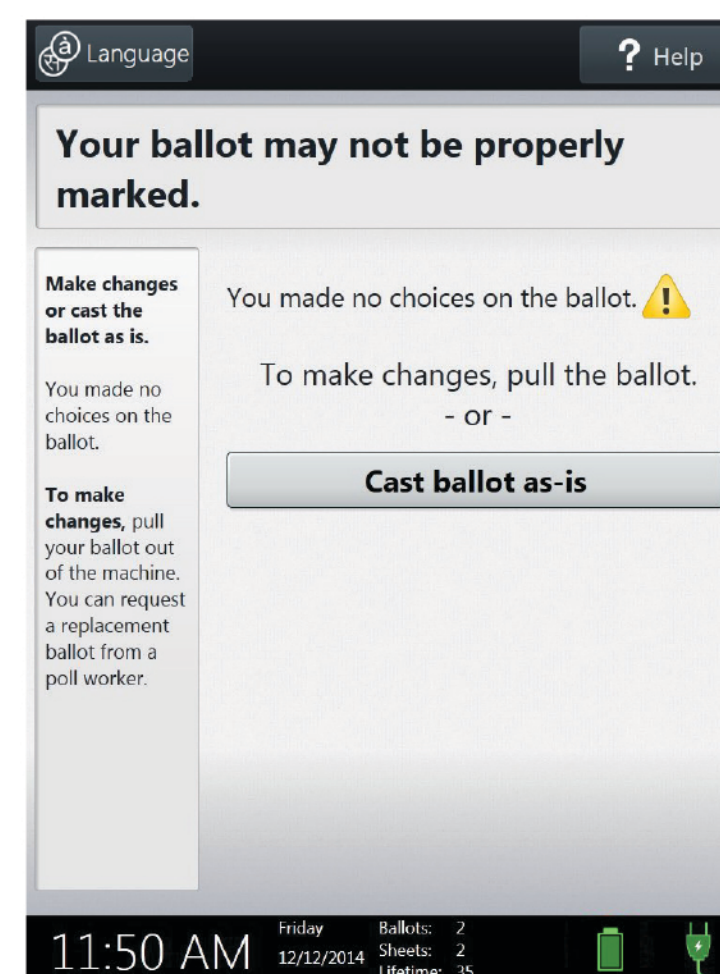
Insert your ballot into the scanner as shown.

▶ *If your ballot contains multiple sheets, insert the first sheet.*



2

If there are any problems with your ballot, follow the instructions on the screen.



3

Your ballot is cast when you see the American flag or hear the chime.

▶ *If your ballot requires multiple sheets, repeat the process for each sheet.*

